



## TECHNICAL INFORMATION



# GATEWAY STUDIOS

## TABLE OF CONTENTS

**STUDIOS AT A GLANCE** ..... 3

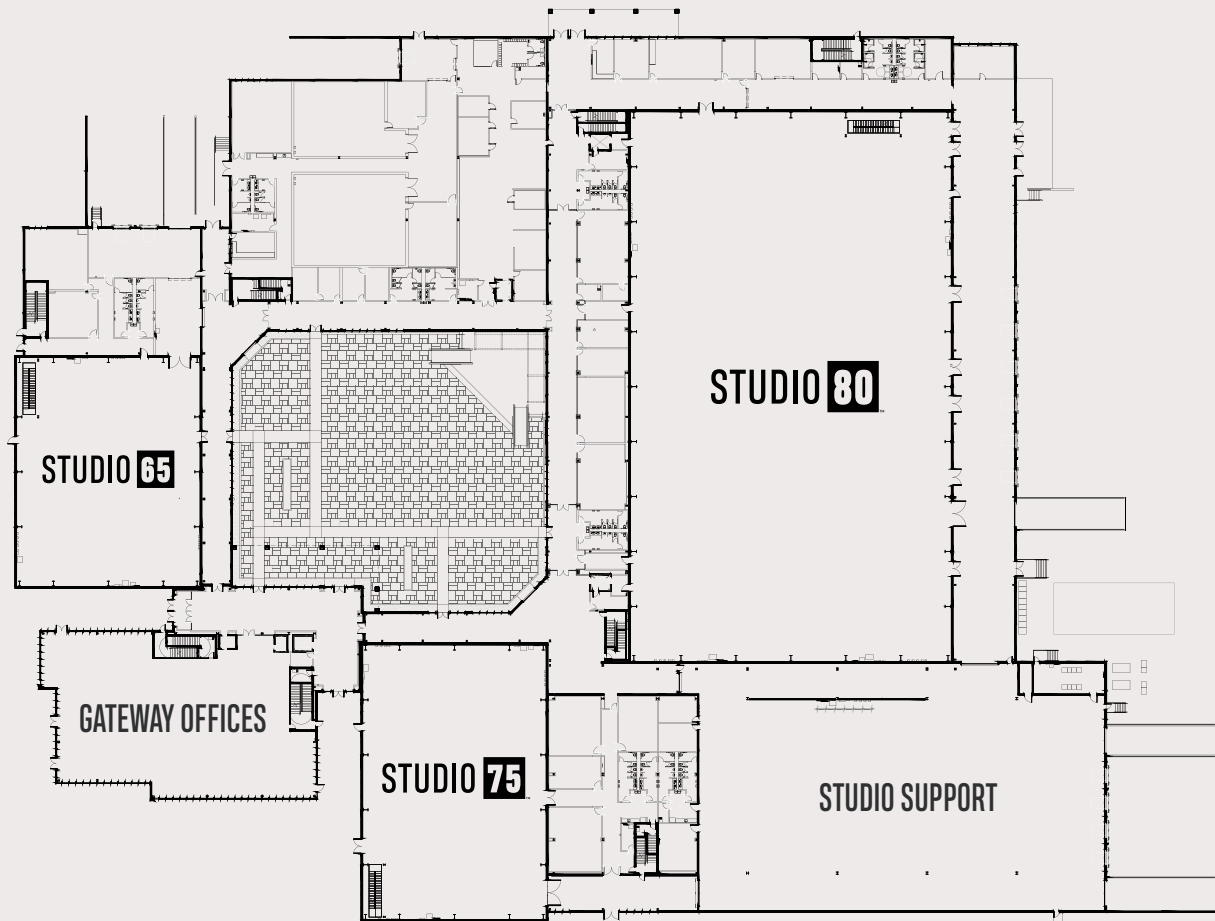
**STUDIO 75** ..... 4

RIGGING ..... 6

POWER ..... 7

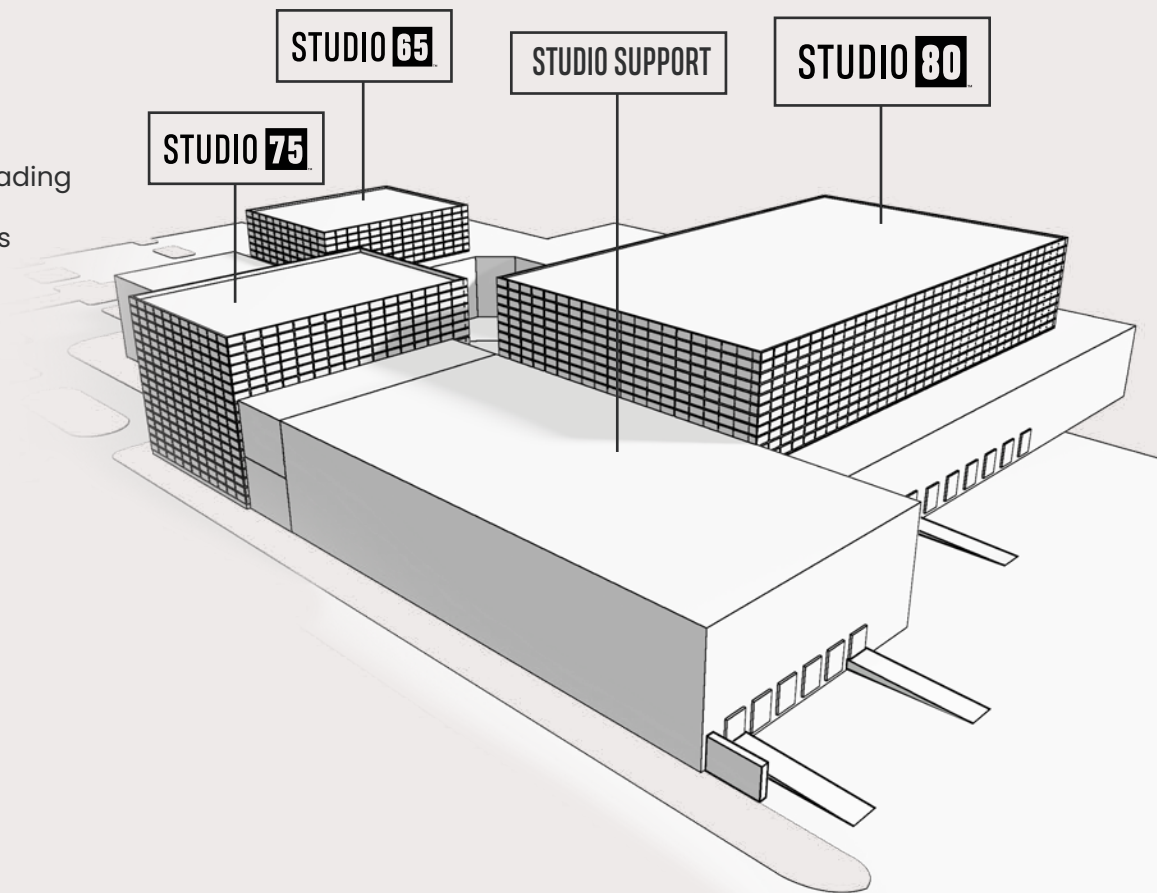
ROOMS ..... 8

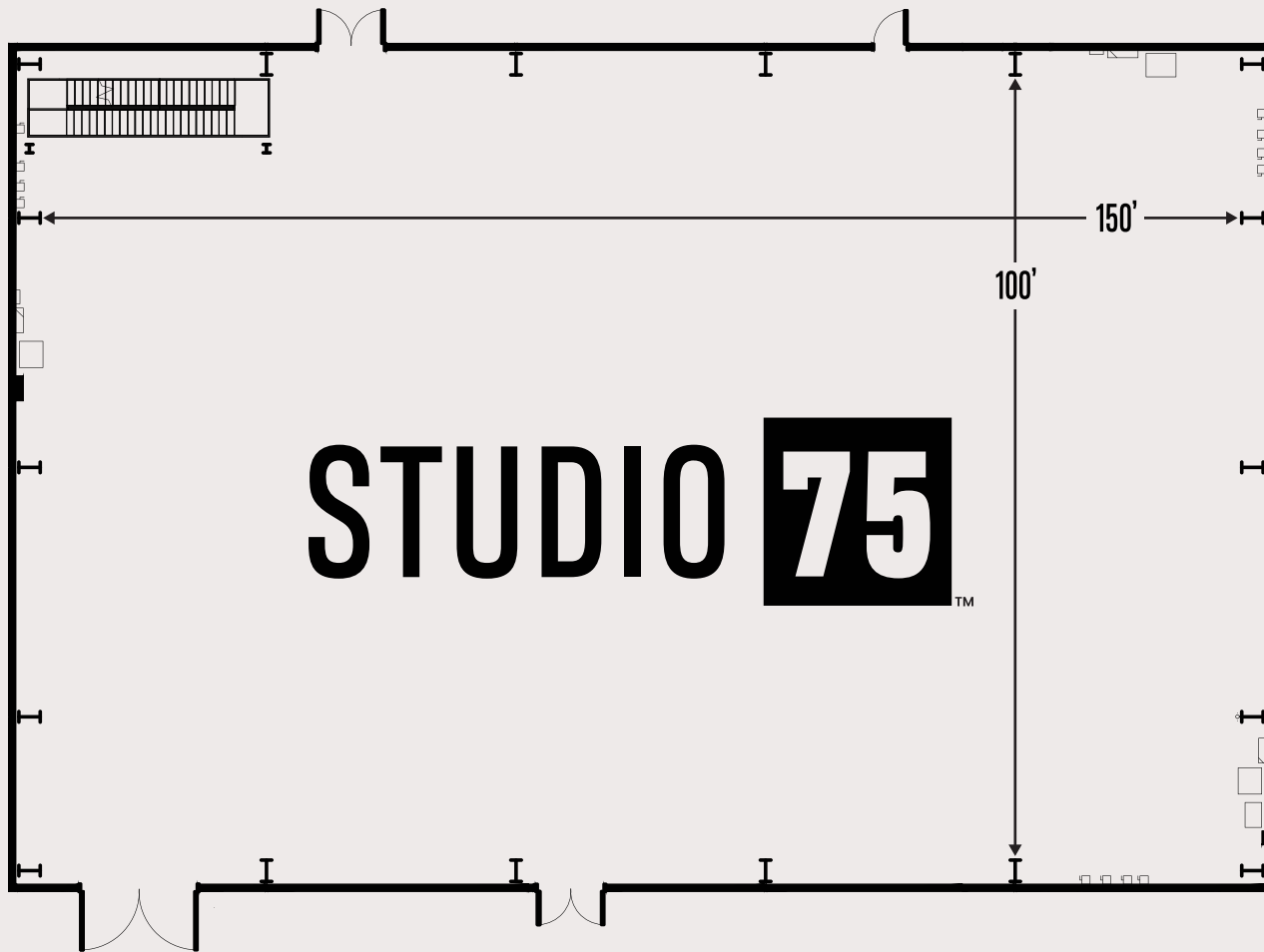
DOCKS ..... 10



## AT A GLANCE

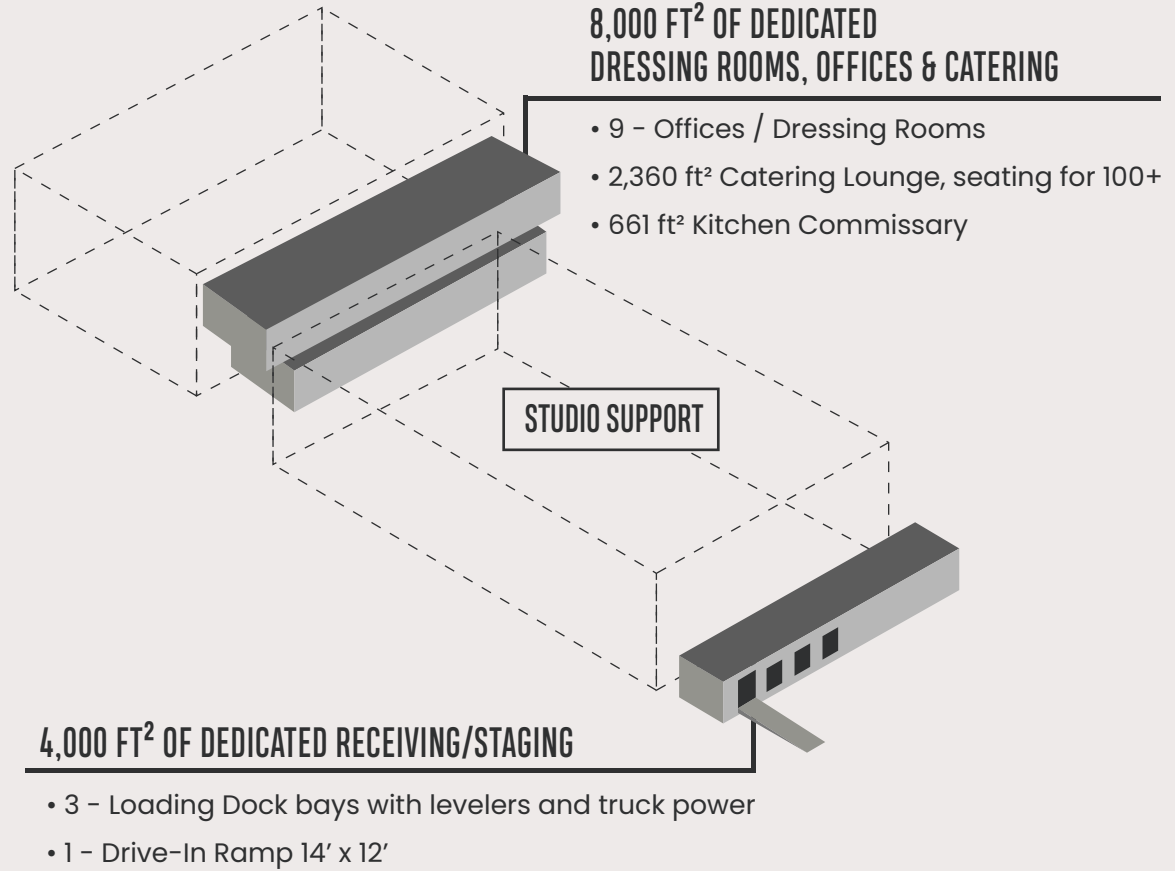
- 3 Multi-purpose Studio Facilities with dedicated loading docks, dressing rooms, offices, and catering lounges
- 80,000 ft<sup>2</sup> of total studio space
- 25,000 ft<sup>2</sup> outdoor courtyard
- 15,700 ft<sup>2</sup> of additional support space
- Full service, on-site catering available
- On-site laundry facilities
- 3 Previsualization Suites
- All studios acoustically treated





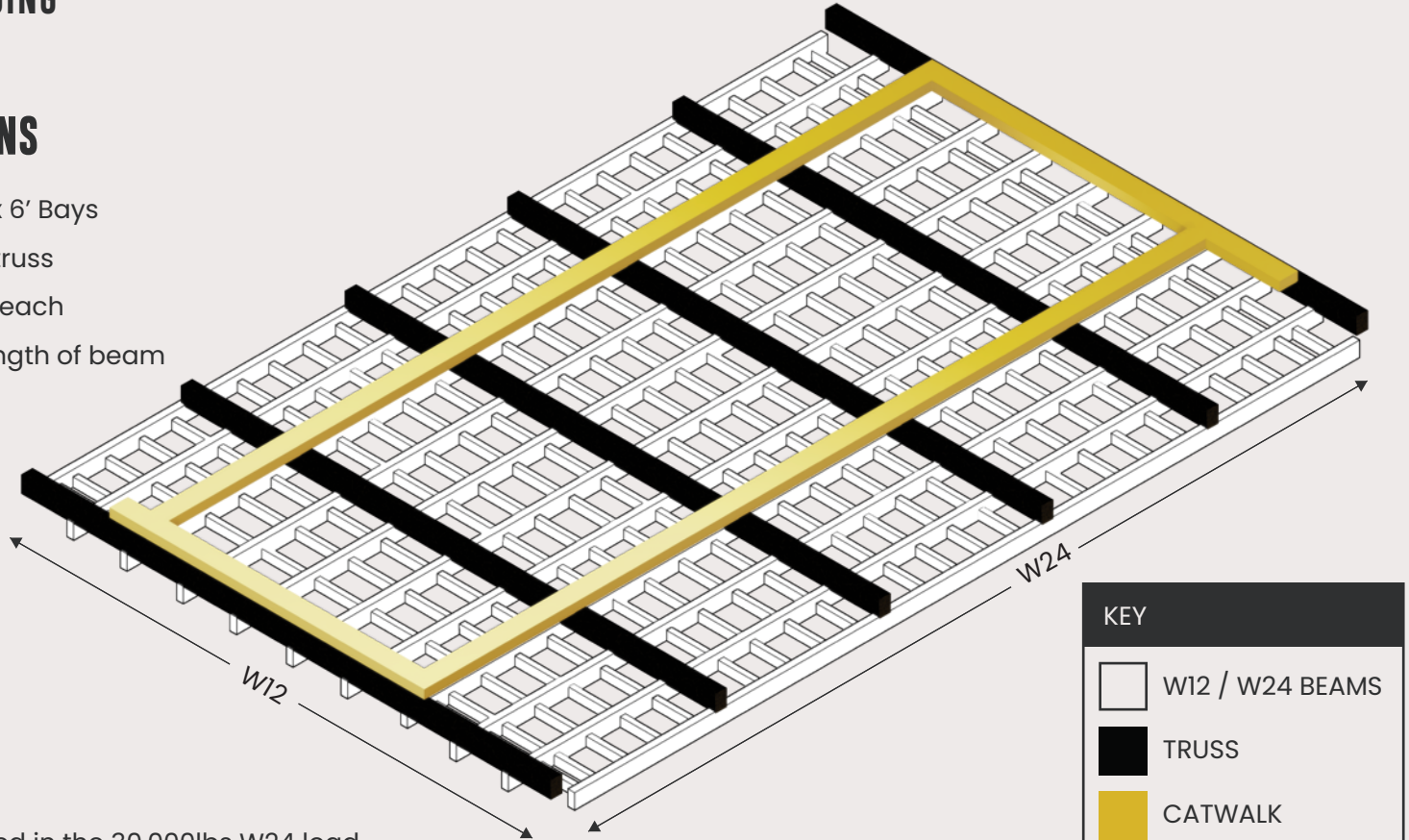
# STUDIO 75™

- 150' x 100' wall to wall
- 15,000 ft<sup>2</sup>
- 75 Foot Grid Height with 10' x 6' Bays
- 1,000,000 pounds Grid Weight Capacity
- Floor Etched to Reflect Rigging Grid
- 6 – 400 Amp, Three Phase Services
- 6 – 200 Amp, Three Phase Services
- Elevator access to second floor
- 4,000 ft<sup>2</sup> of receiving / staging
- 8,000 ft<sup>2</sup> of additional offices / rooms
- Laundry Room with 2 sets of washers and dryers
- Every room includes:
  - Power
  - WI-FI
  - Access Control
- Hardwire data available on request



## RIGGING SPECIFICATIONS

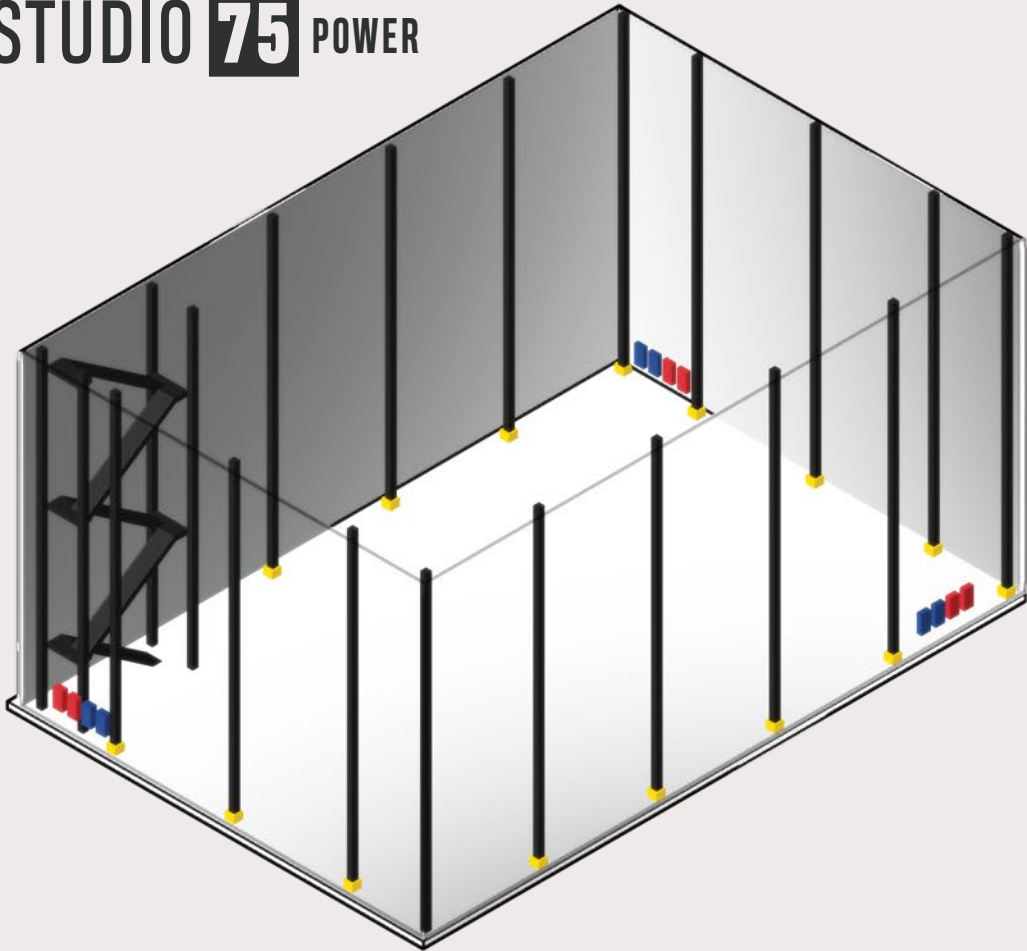
- 75 Foot Grid Height with 10' x 6' Bays
- 200,000 lbs. between each truss
- Two Endwalls at 100,000 lbs each
- 30,000 lbs. on W24 along length of beam
- 10,000 lbs. on W12\*







\*Loads on the W12 are included in the 30,000lbs W24 load

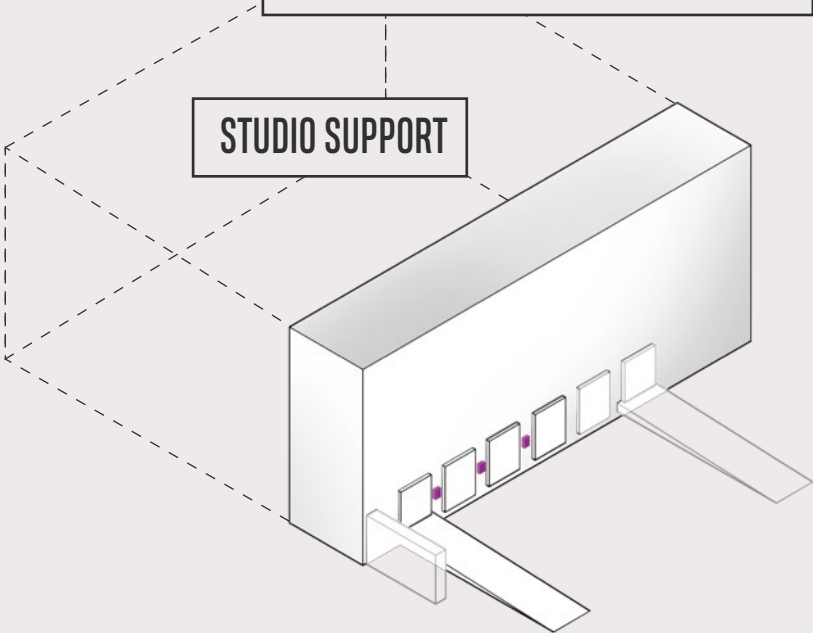


# STUDIO 75 POWER

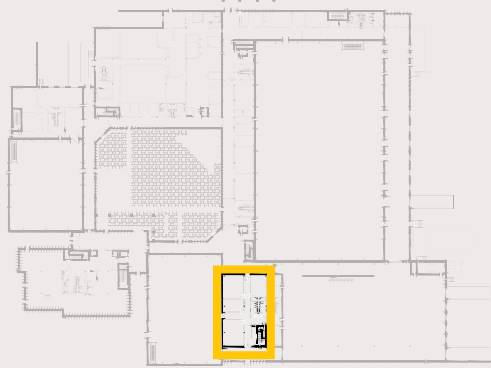
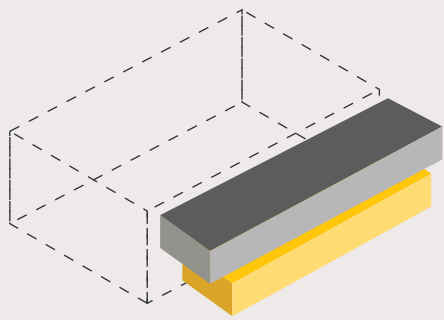


KEY

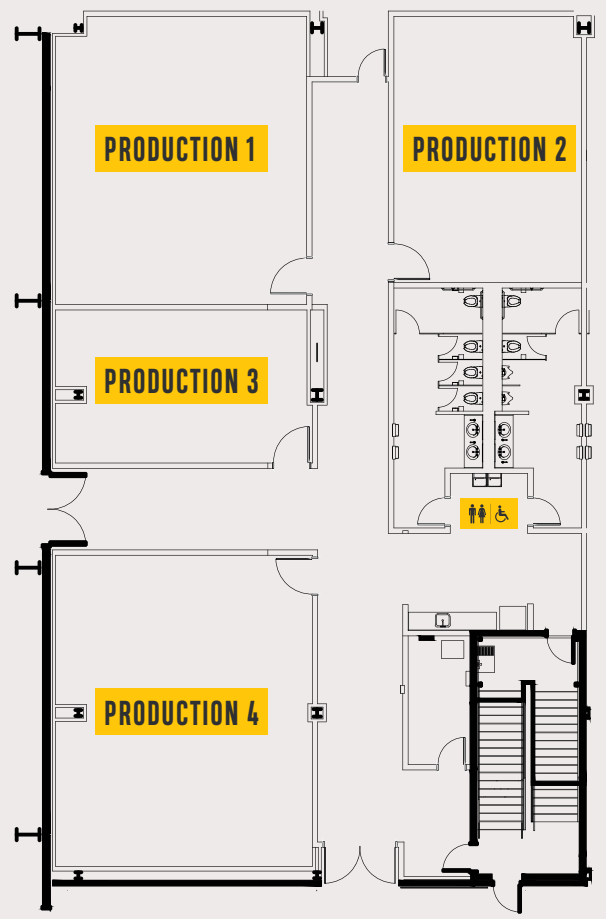
	200 amp, Three Phase Service (6)
	400 amp, Three Phase Service (6)
	20 amp Quad Box & Data Port (15)
	20 amp - Truck Power (3)



# STUDIO 75 FIRST FLOOR ROOMS

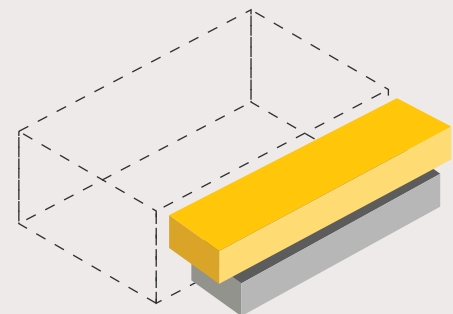


<b>PRODUCTION 1</b>	28' x 32' ..... 896 ft <sup>2</sup>
<b>PRODUCTION 2</b>	21' x 30' ..... 630 ft <sup>2</sup>
<b>PRODUCTION 3</b>	28' x 17' ..... 476 ft <sup>2</sup>
<b>PRODUCTION 4</b>	28' x 35' ..... 980 ft <sup>2</sup>



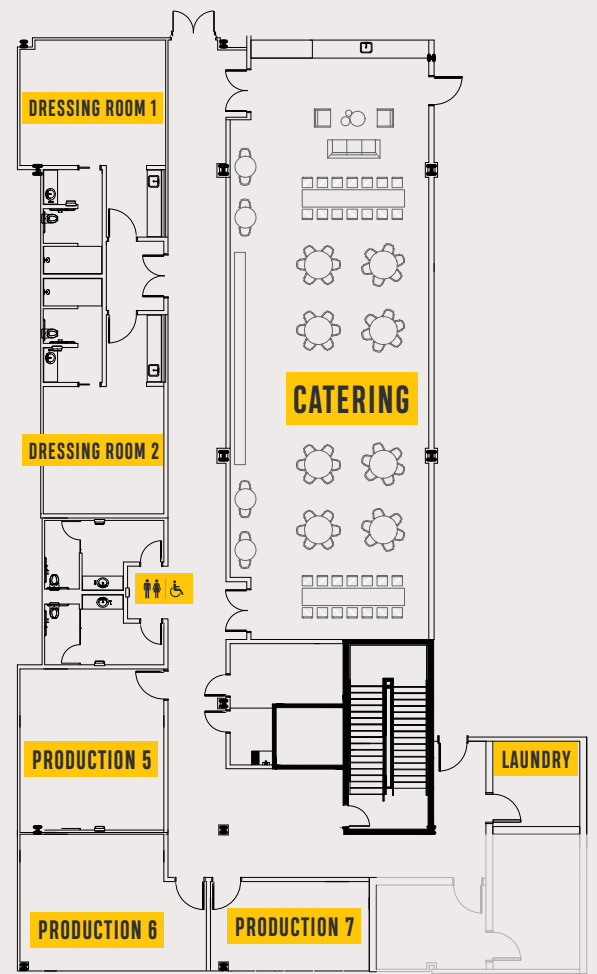


# STUDIO 75 SECOND FLOOR ROOMS



<b>DRESSING ROOM 1</b>	20' x 28' . . . . .	560 ft <sup>2</sup>	♂ ♀ ♿
<b>DRESSING ROOM 2</b>	17' x 18' . . . . .	306 ft <sup>2</sup>	♂ ♀ ♿
<b>PRODUCTION 5</b>	20' x 23' . . . . .	460 ft <sup>2</sup>	
<b>PRODUCTION 6</b>	20' x 19' . . . . .	380 ft <sup>2</sup>	
<b>PRODUCTION 7</b>	22' x 12' . . . . .	264 ft <sup>2</sup>	
<b>CATERING</b>	. . . . . 2,352 ft <sup>2</sup>		
<b>LAUNDRY</b>			

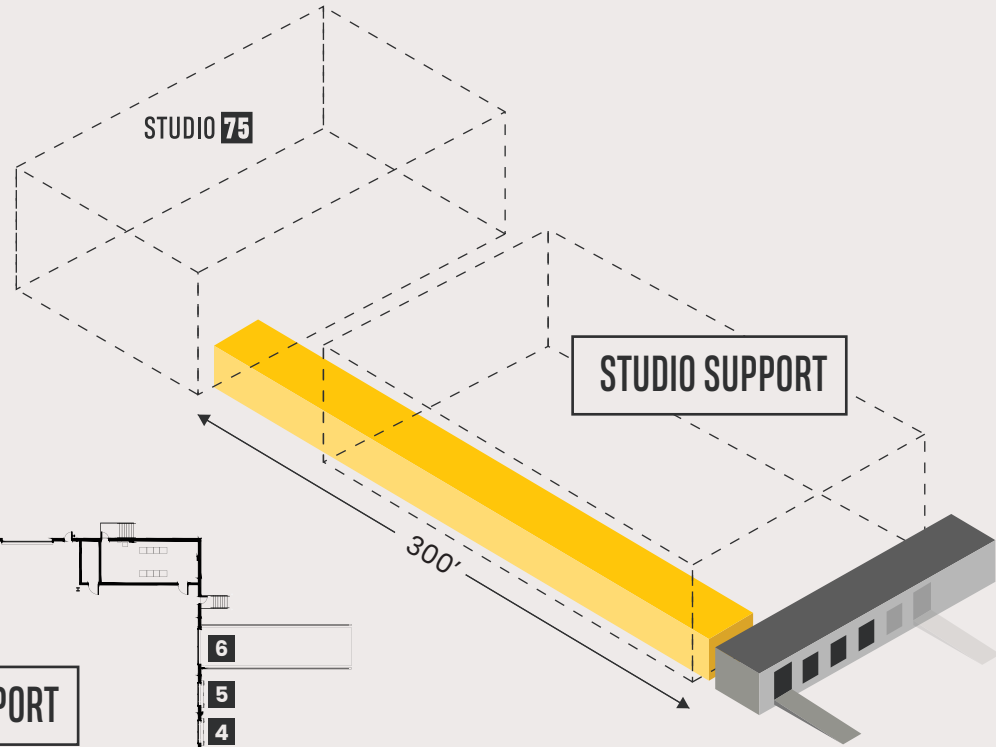
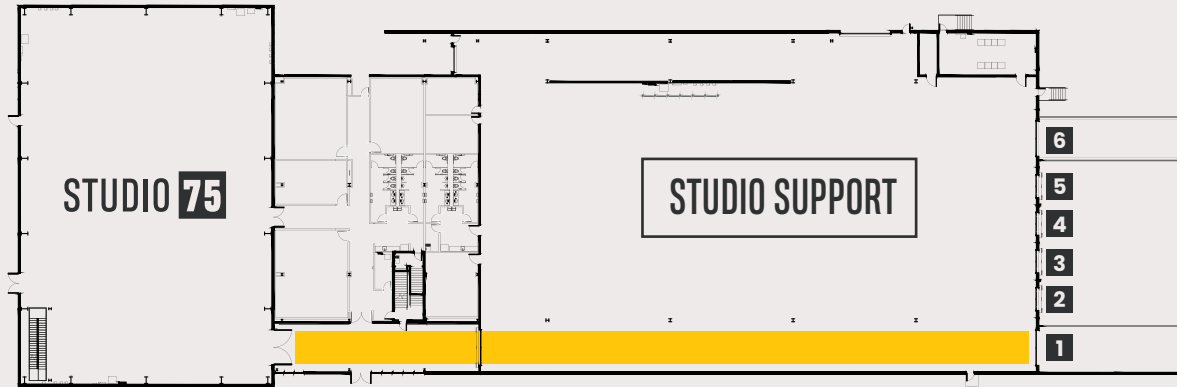
\*Additional “space” available upon request



# STUDIO 75 DOCKS

The Studio 75 docks are located on the east side of our Studio Support space. Trucks can use the drive-up ramp (Door 1) to drive directly into Studio 75 as well as utilize the three additional docks (Doors 2, 3, & 4).

Doors 5 & 6 are reserved for Studio Support.



# ADDRESS

## **Gateway Studios**

900 Spirit of Saint Louis Blvd  
Chesterfield, MO 63005

# CONTACT

For studio inquiries and questions:  
**[studios@gsps.com](mailto:studios@gsps.com)**

