



TECHNICAL INFORMATION



GATEWAY STUDIOS

TABLE OF CONTENTS

STUDIOS AT A GLANCE 3

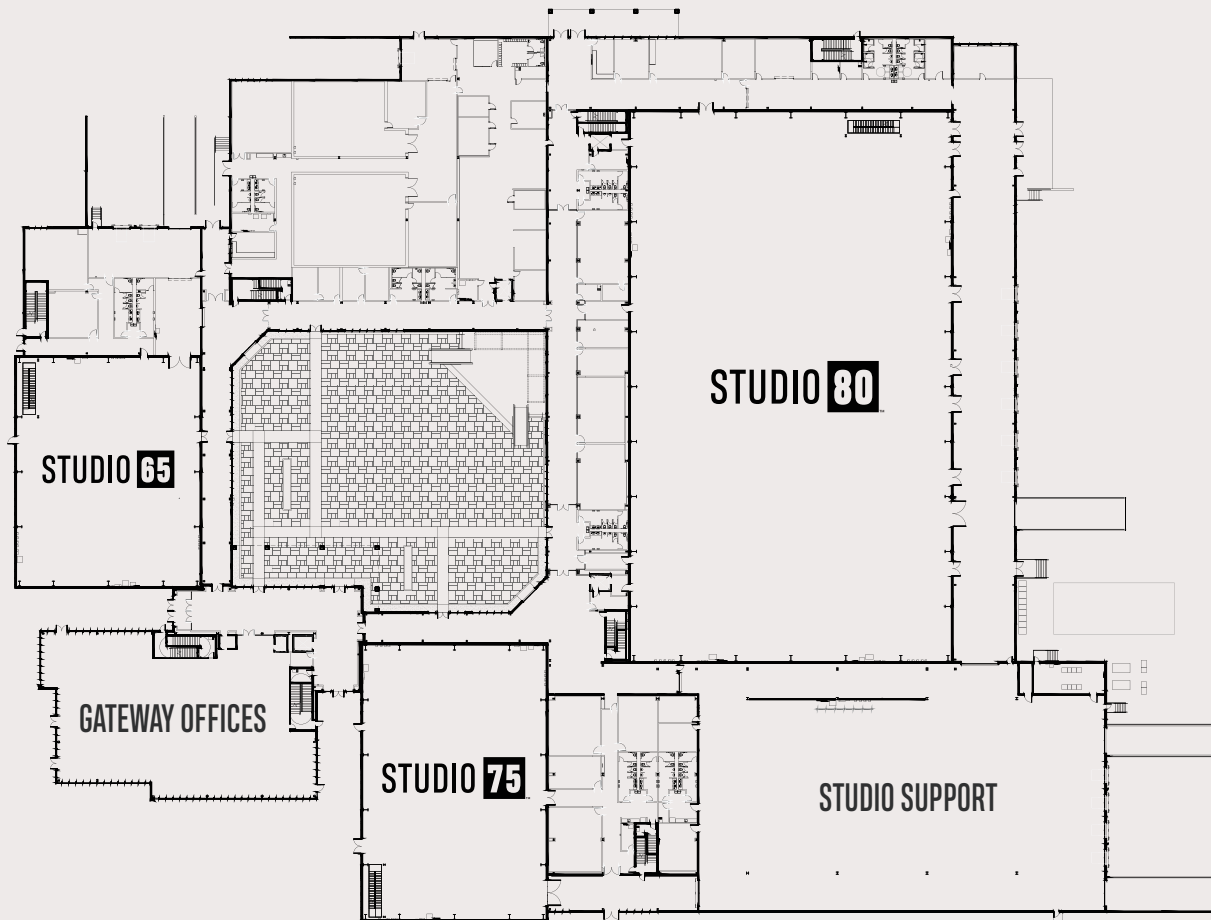
STUDIO 75 4

RIGGING 6

POWER 7

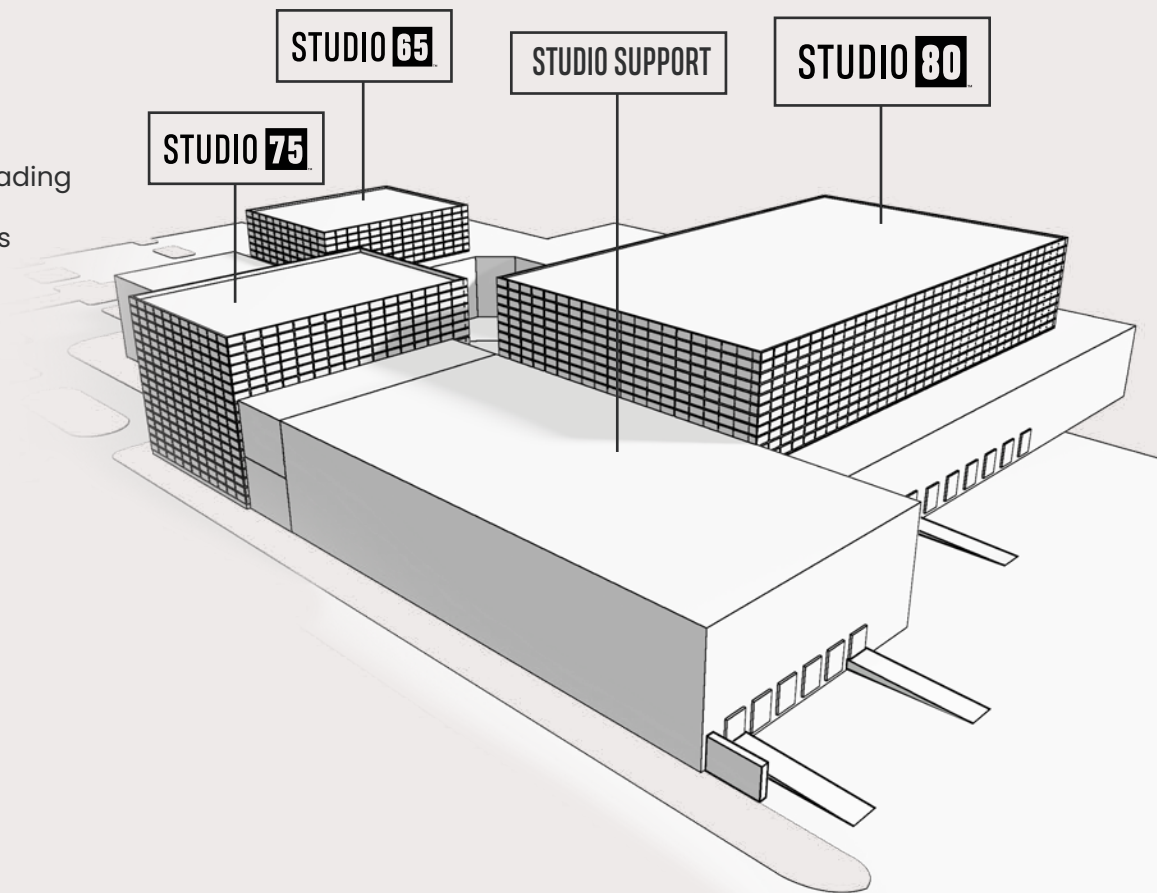
ROOMS 8

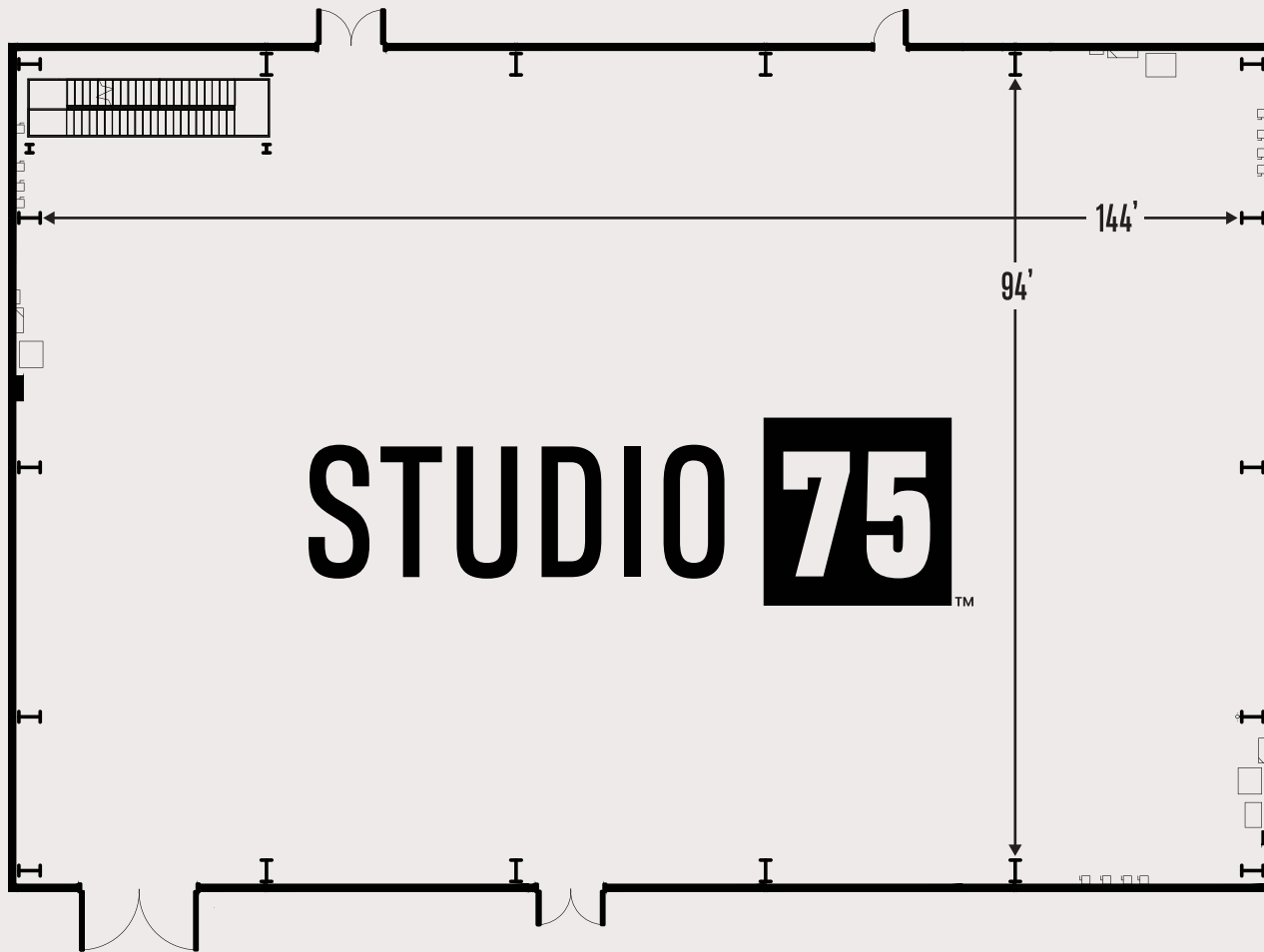
DOCKS 10



AT A GLANCE

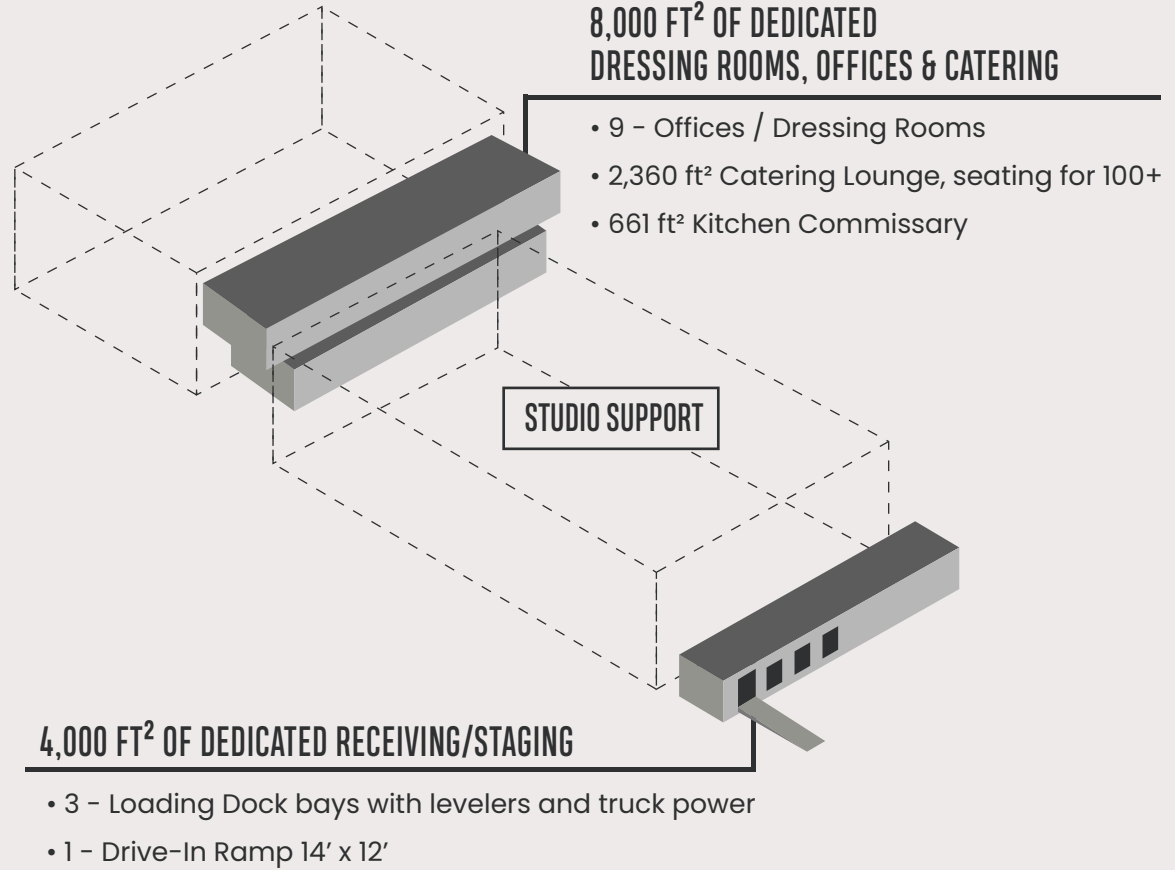
- 3 Multi-purpose Studio Facilities with dedicated loading docks, dressing rooms, offices, and catering lounges
- 80,000 ft² of total studio space
- 25,000 ft² outdoor courtyard
- 15,700 ft² of additional support space
- Full service, on-site catering available
- On-site laundry facilities
- 3 Previsualization Suites
- All studios acoustically treated





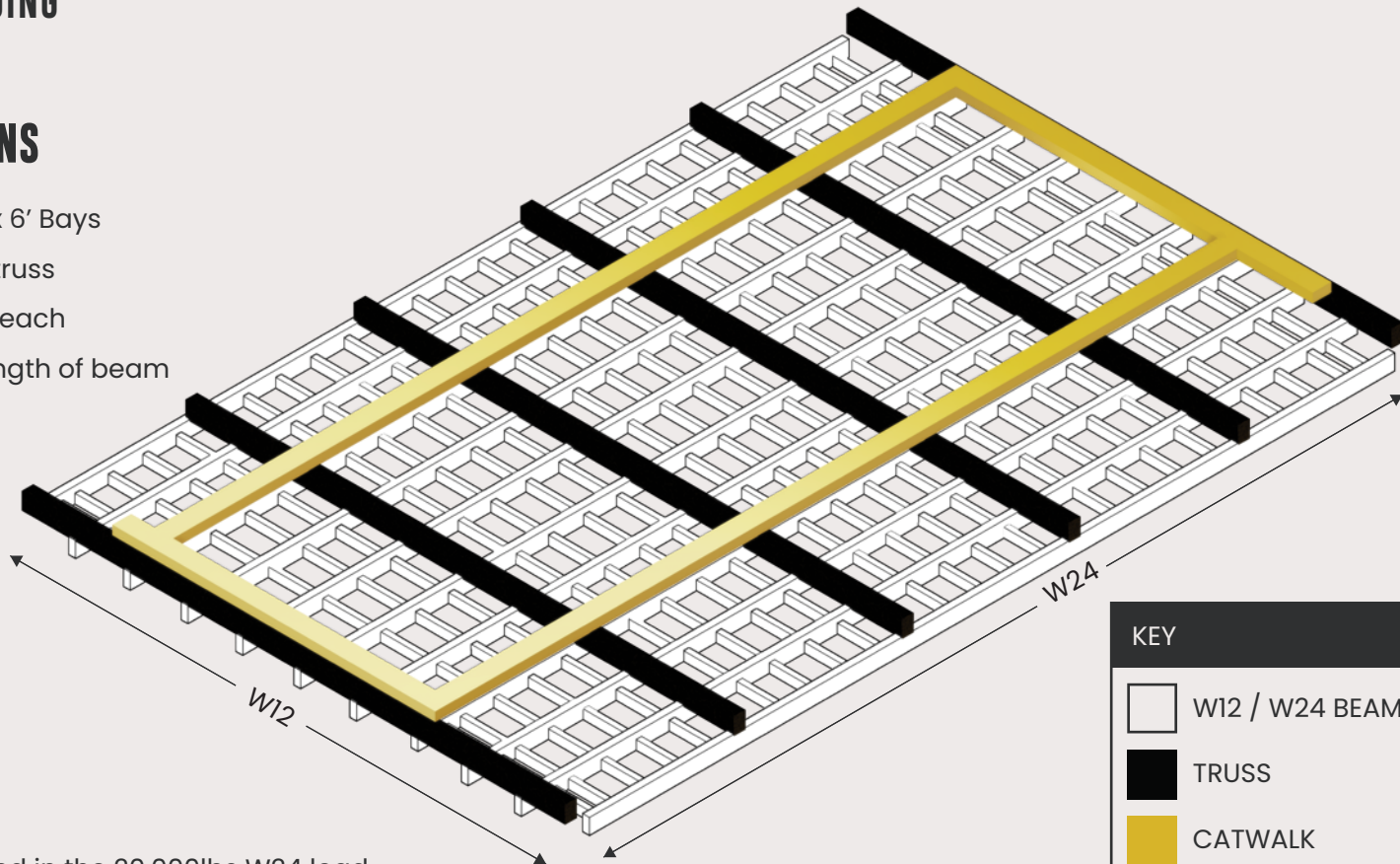
STUDIO 75™

- 150' x 100' wall to wall
- 144' x 94' – beam to beam
- 15,000 ft²
- 75 Foot Grid Height with 10' x 6' Bays
- 1,000,000 pounds Grid Weight Capacity
- Floor Etched to Reflect Rigging Grid
- 6 – 400 Amp, Three Phase Services
- 6 – 200 Amp, Three Phase Services
- Elevator access to second floor
- 4,000 ft² of receiving / staging
- 8,000 ft² of additional offices / rooms
- Every room includes:
 - Power
 - Wi-Fi
 - Access Control
- Hardwire data available on request



RIGGING SPECIFICATIONS

- 75 Foot Grid Height with 10' x 6' Bays
- 200,000 lbs. between each truss
- Two Endwalls at 100,000 lbs each
- 30,000 lbs. on W24 along length of beam
- 10,000 lbs. on W12*



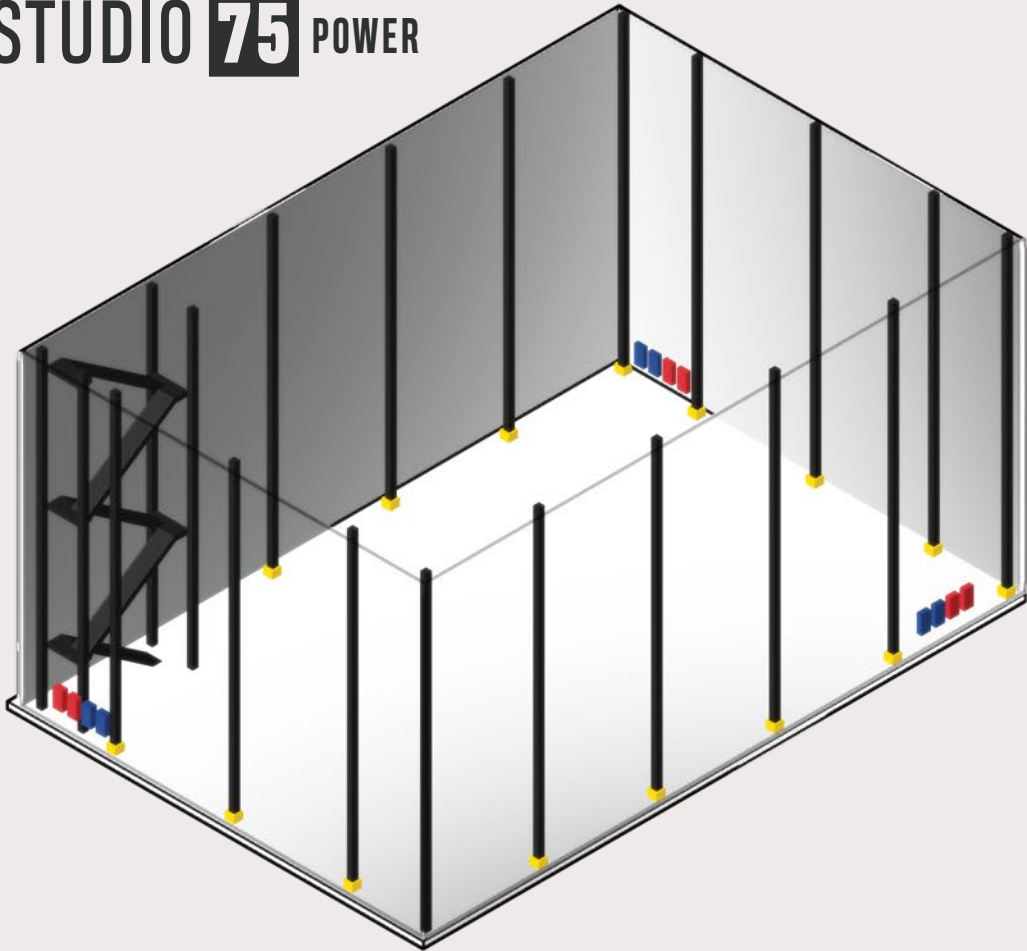
KEY

- W12 / W24 BEAMS
- TRUSS
- CATWALK

*Loads on the W12 are included in the 20,000lbs W24 load



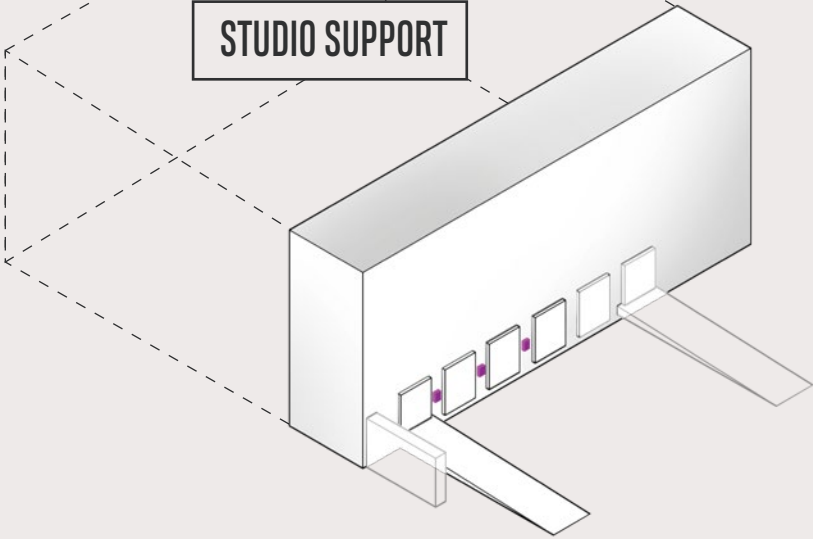
STUDIO 75 POWER



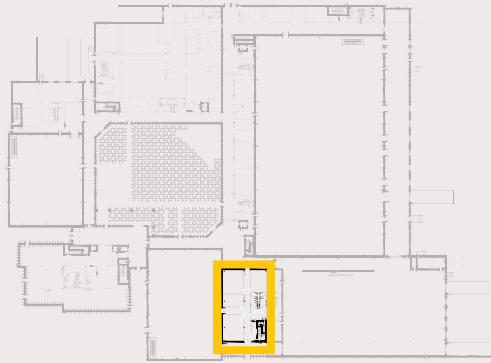
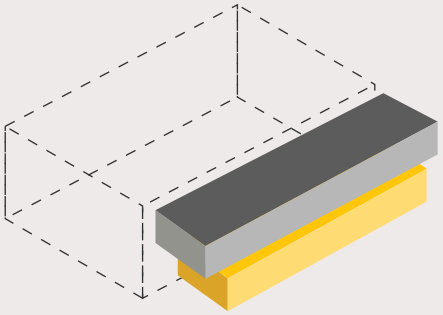
KEY

- 200 amp, Three Phase Service (6)
- 400 amp, Three Phase Service (6)
- 20 amp Quad Box & Data Port (15)
- 20 amp - Truck Power (3)

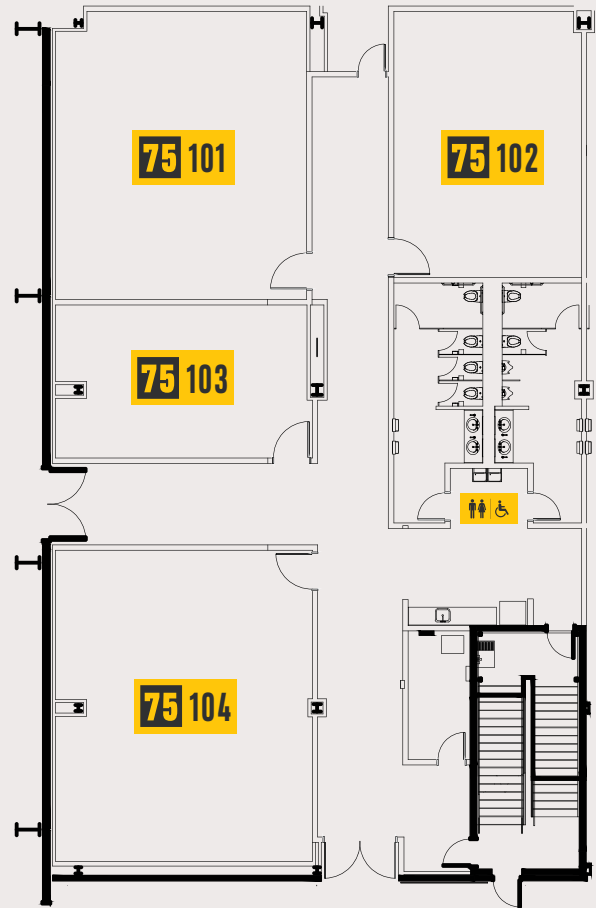
STUDIO SUPPORT



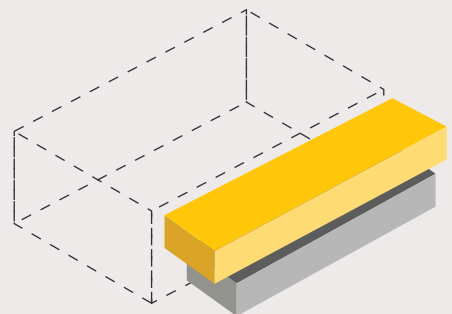
STUDIO 75 FIRST FLOOR ROOMS



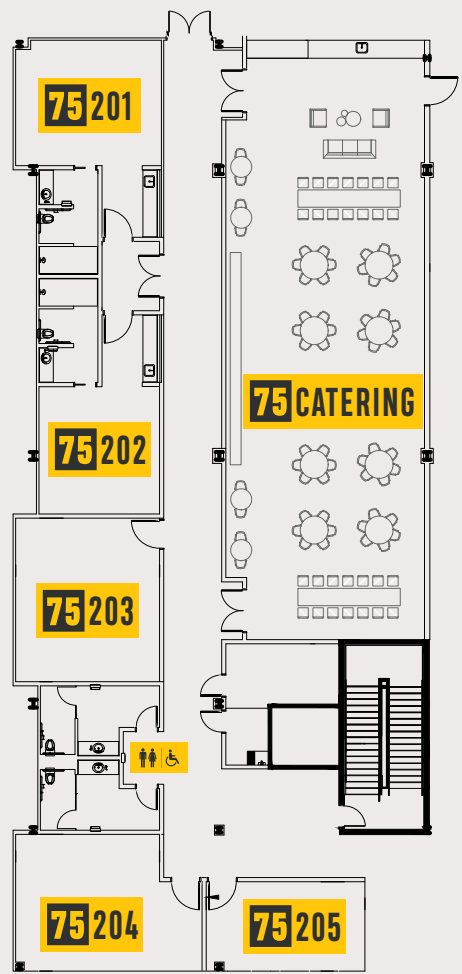
- 75 101** 28' x 32' 896 ft²
- 75 102** 21' x 30' 630 ft²
- 75 103** 28' x 17' 476 ft²
- 75 104** 28' x 35' 980 ft²



STUDIO 75 SECOND FLOOR ROOMS

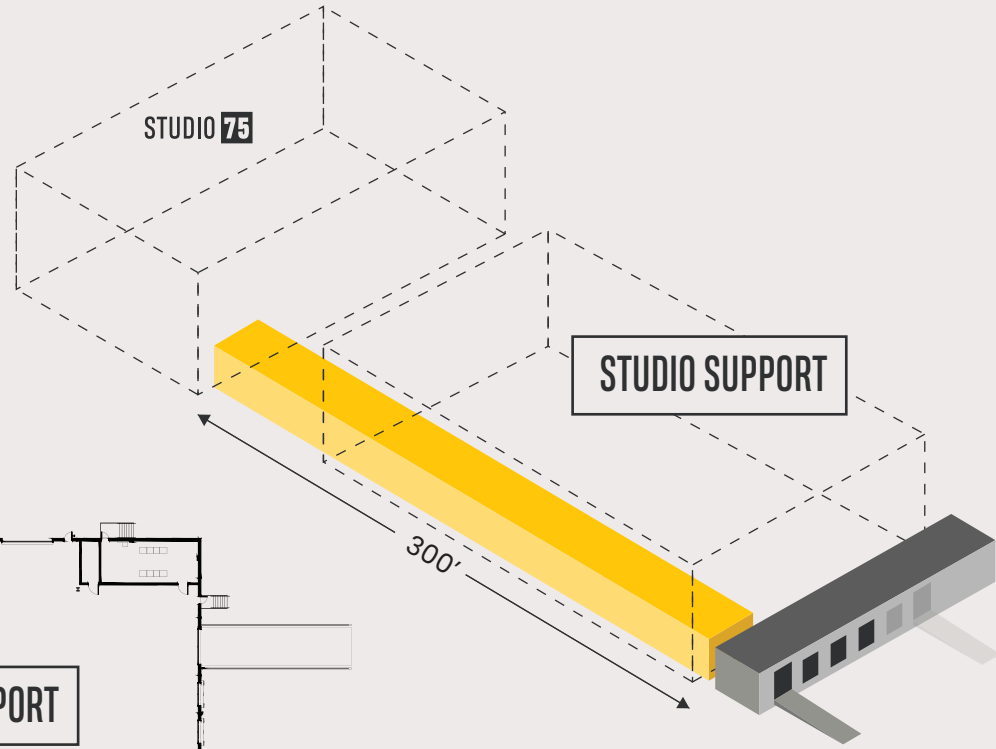


- 75 201** 20' x 28' 560 ft² ♀♂♿
- 75 202** 17' x 18' 306 ft² ♀♂♿
- 75 203** 20' x 23' 460 ft²
- 75 204** 20' x 19' 380 ft²
- 75 205** 22' x 12' 264 ft²
- 75 CATERING** 2,352 ft²



STUDIO 75 DOCKS

The Studio 75 docks are located on the east side of our Studio Support space. Trucks can use the drive-up ramp to drive directly into Studio 75 as well as utilize the three additional docks.



ADDRESS

Gateway Studios

900 Spirit of Saint Louis Blvd
Chesterfield, MO 63005

CONTACT

For studio inquiries and questions:
studios@gsps.com

