

GATEWAY[™]
S T U D I O S

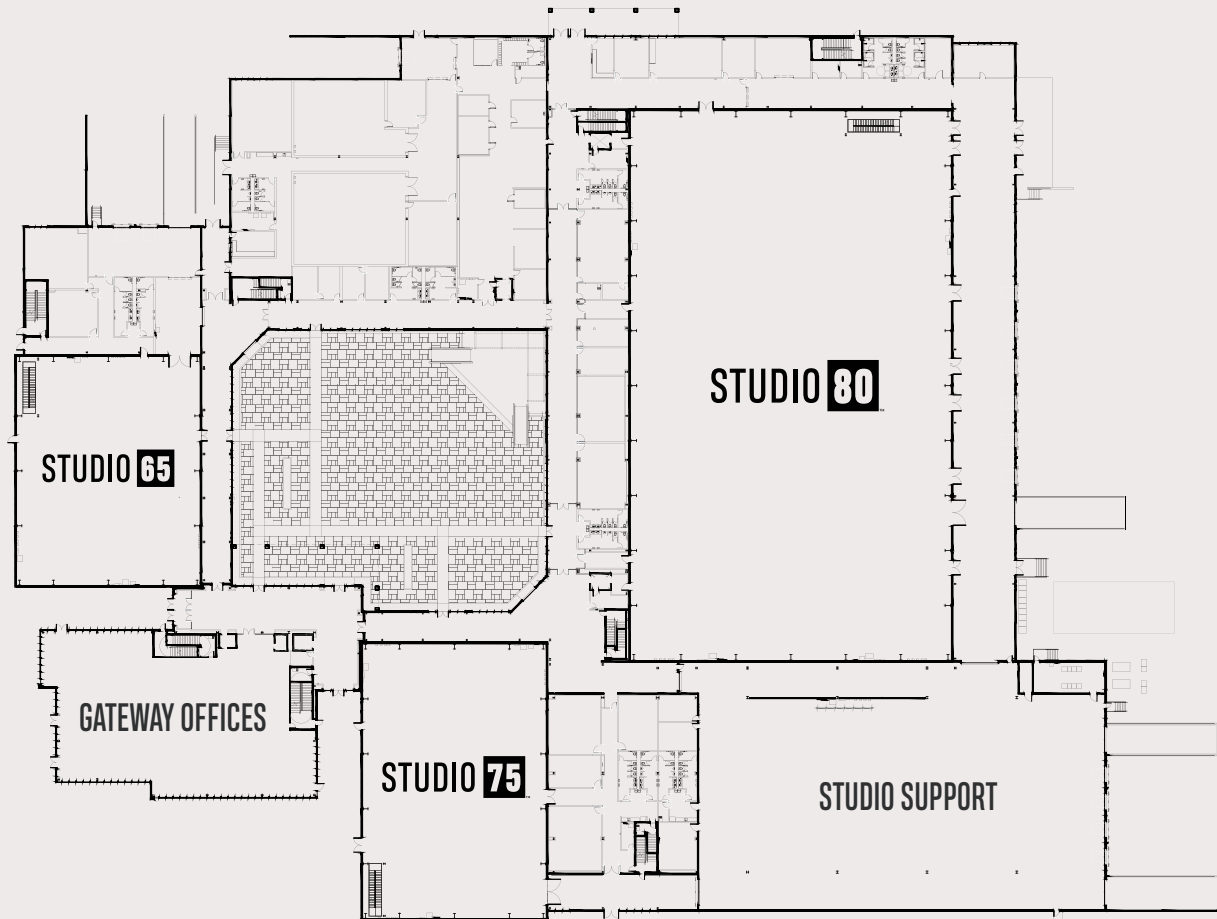
STUDIO [™]

TECHNICAL INFORMATION



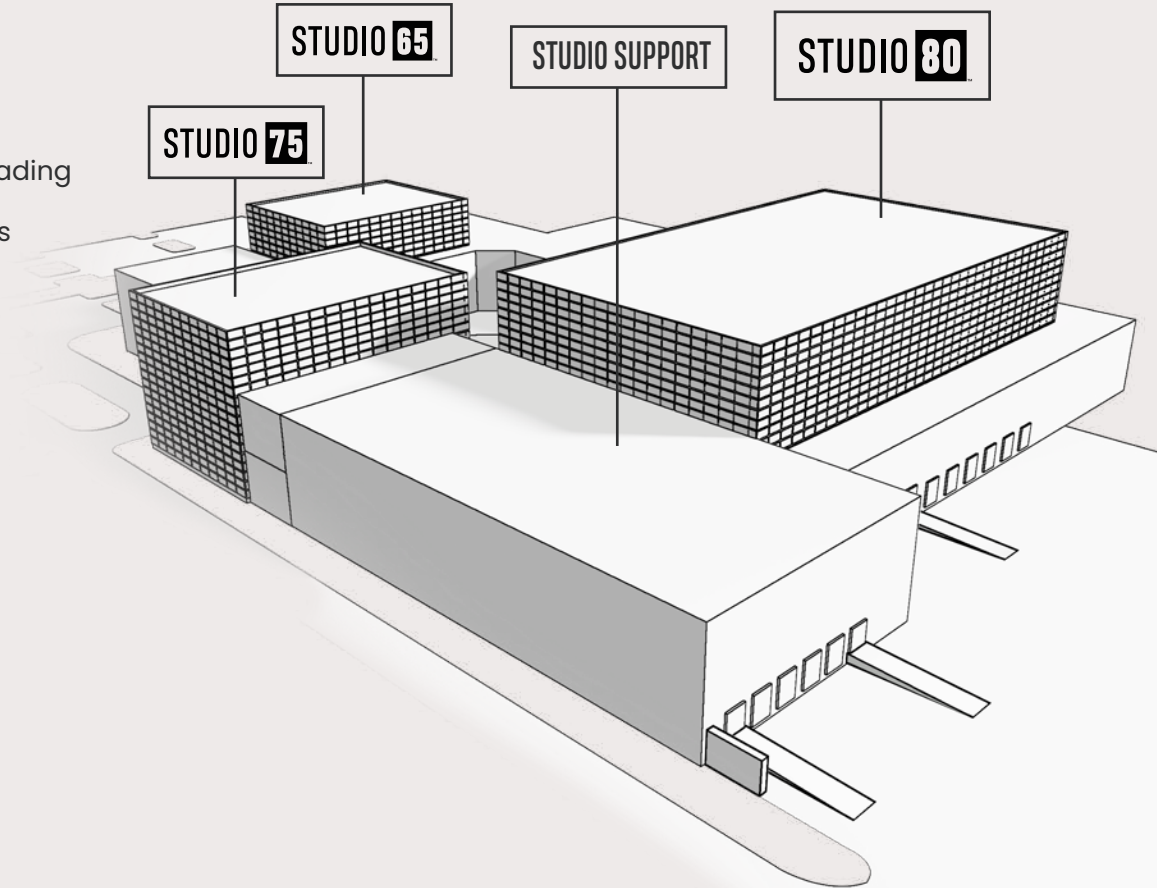
TABLE OF CONTENTS

| | |
|---------------------------|----|
| STUDIOS AT A GLANCE | 3 |
| STUDIO 80 | 4 |
| RIGGING | 6 |
| POWER | 7 |
| ROOMS | 8 |
| CATERING | 10 |



AT A GLANCE

- 3 Multi-purpose Studio Facilities with dedicated loading docks, dressing rooms, offices, and catering lounges
- 80,000 ft² of total studio space
- 25,000 ft² outdoor courtyard
- 15,700 ft² of additional support space
- Full service, on-site catering available
- On-site laundry facilities
- 3 Previsualization Suites
- All studios acoustically treated



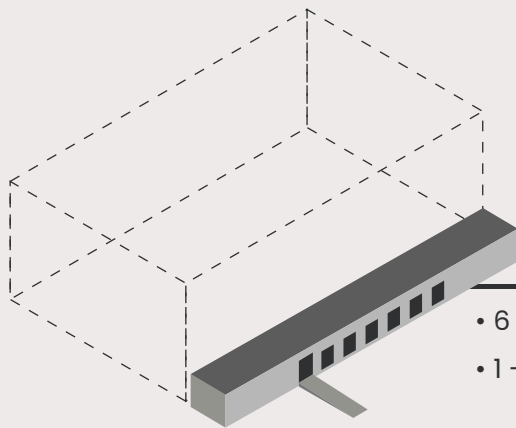


STUDIO 80TM



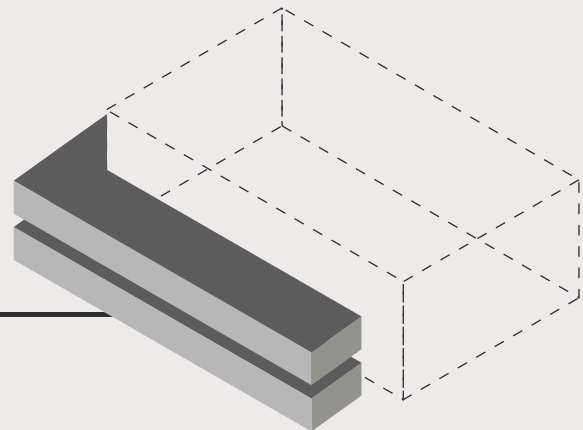
STUDIO 80™

- 300' x 175' Wall-to-Wall
- 52,500 ft²
- 80 Foot Grid Height with 10' x 10' Bays
- 2,000,000 pounds Grid Weight Capacity
- Floor Etched to Reflect Rigging Grid
- 10 – 400 Amp, Three Phase Services
- 8 – 200 Amp, Three Phase Services
- Elevator access to second floor
- 10,800 ft² receiving / staging
- 15,000 ft² additional offices / rooms
- Laundry Room with 5 sets of washers and dryers and 2 guest hookups
- Every room includes:
 - Power
 - WI-FI
 - Access Control
- Hardwire data available on request



10,800 FT² OF DEDICATED RECEIVING/STAGING

- 6 – Loading Dock bays with levelers and truck power
- 1 – Drive-In Ramp 14' x 12'



15,000 FT² OF DEDICATED DRESSING ROOMS, OFFICES & CATERING

- 13 – Offices / Dressing Rooms
- 5,396 ft² Catering Lounge, seating for 150+
- 1,776 ft² Kitchen Commissary



RIGGING SPECIFICATIONS

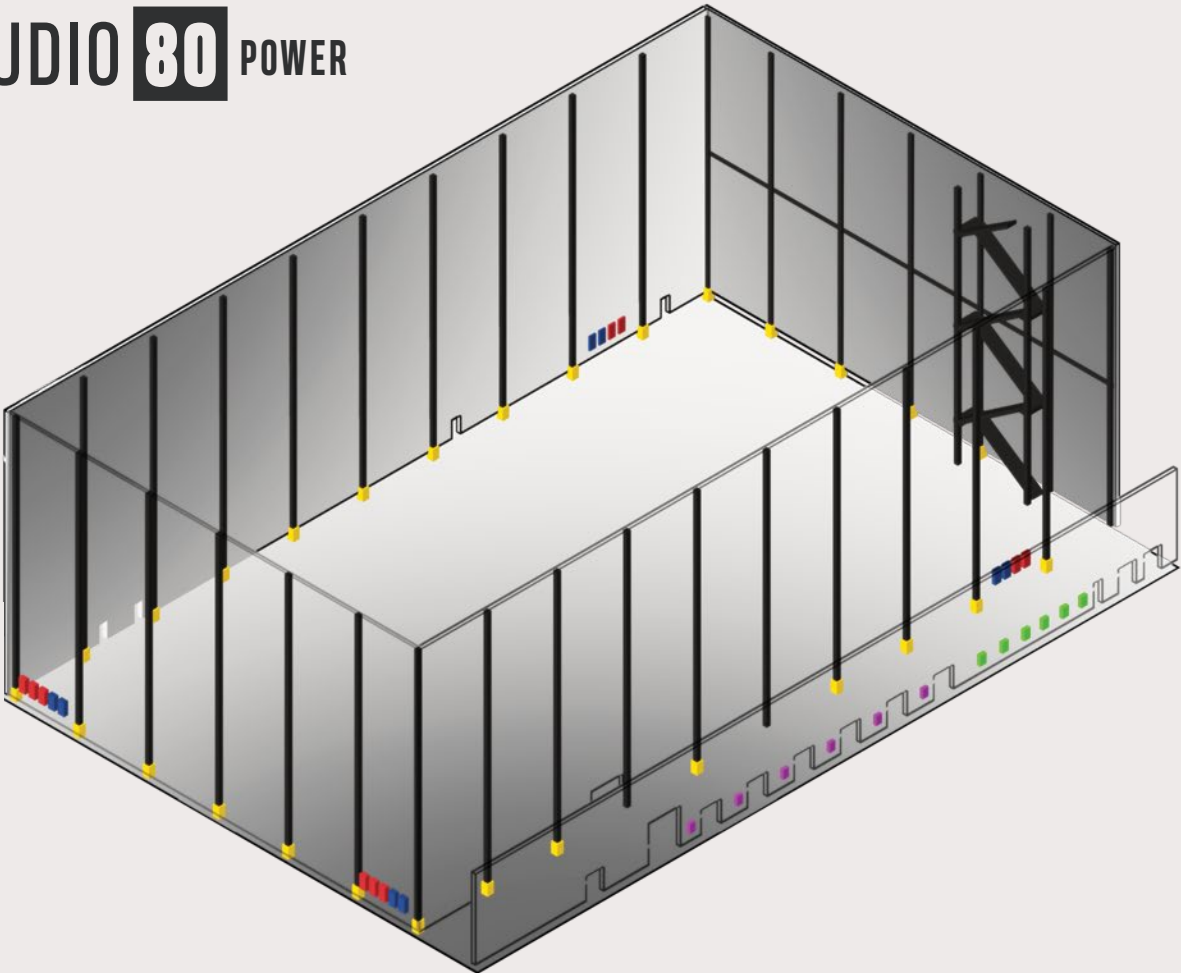
- 80 Foot Grid Height with 10' x 10' Bays
- 200,000 lbs. between each truss
- Two Endwalls at 100,000 lbs each
- 30,000 lbs. on W24 along length of beam
- 10,000 lbs. on W12*



*Loads on the W12 are included in the 20,000lbs W24 load



STUDIO 80 POWER



KEY

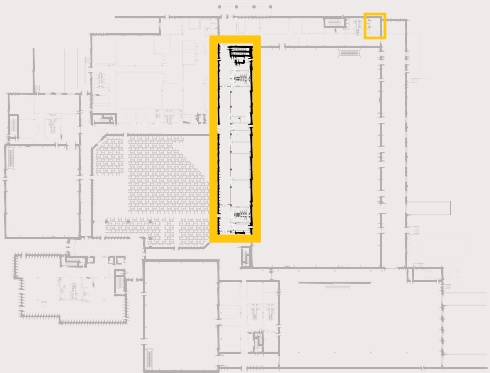
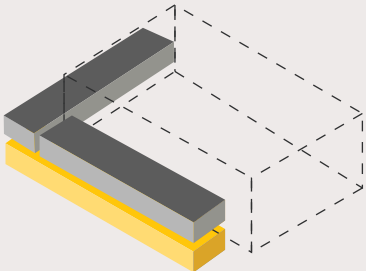
- 200 amp, Three Phase Service (8)
- 400 amp, Three Phase Service (10)
- 20 amp Quad Box & Data Port (28)
- 20 amp + 50 amp - Bus Power (6)
- 20 amp - Truck Power (6)

BACKUP GENERATORS

Two 2,750 ekW backup generators provide a total potential of 5,550kW of emergency backup power to the entire studio campus.



STUDIO 80 FIRST FLOOR ROOMS



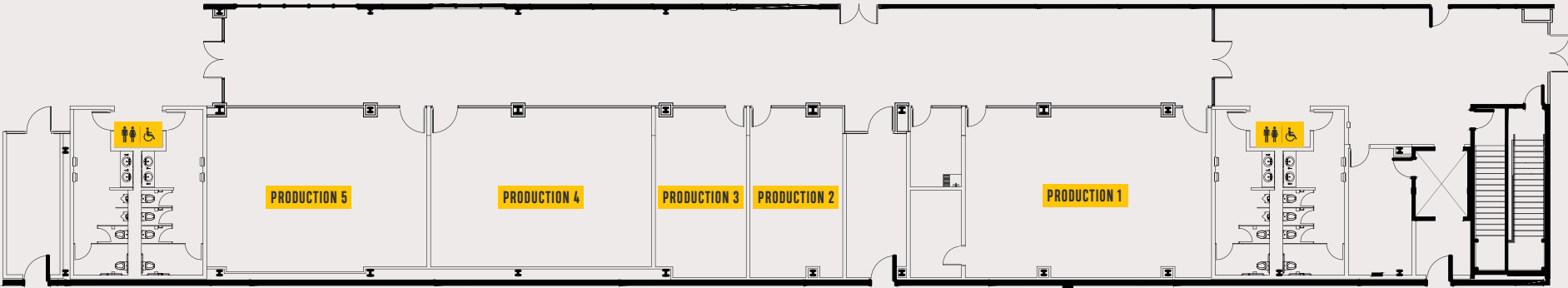
PRODUCTION 1 39' x 27' 1,053 ft²

PRODUCTION 2 14' x 27' 378 ft²

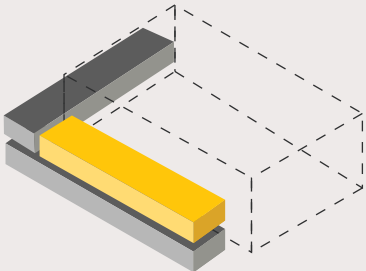
PRODUCTION 3 14' x 27' 378 ft²

PRODUCTION 4 35' x 25' 875 ft²

PRODUCTION 5 35' x 25' 875 ft²



STUDIO 80 SECOND FLOOR ROOMS



PRODUCTION 6 26' x 16' 416 ft²

DRESSING ROOM 3 22' x 26' 572 ft² ♀♂♿

DRESSING ROOM 1 22' x 26' 572 ft² ♀♂♿

DRESSING ROOM 4 22' x 26' 572 ft² ♀♂♿

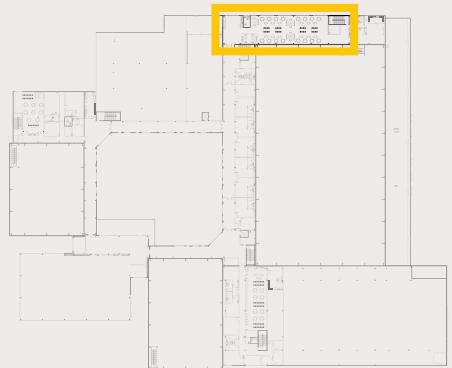
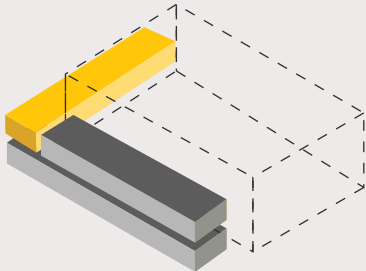
DRESSING ROOM 2 22' x 26' 572 ft² ♀♂♿

DRESSING ROOM 5 22' x 26' 572 ft² ♀♂♿

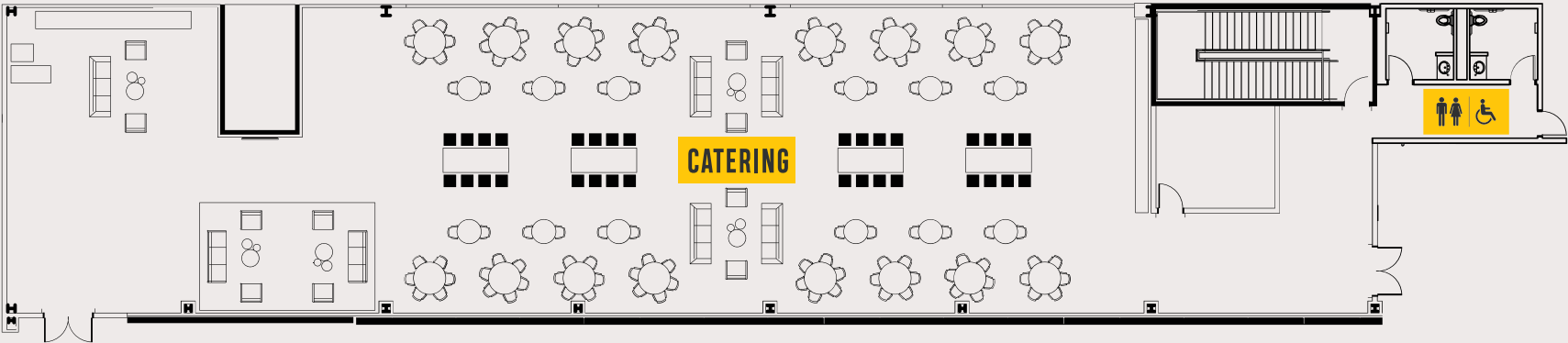
*Additional "space" available upon request



STUDIO 80 CATERING LOUNGE



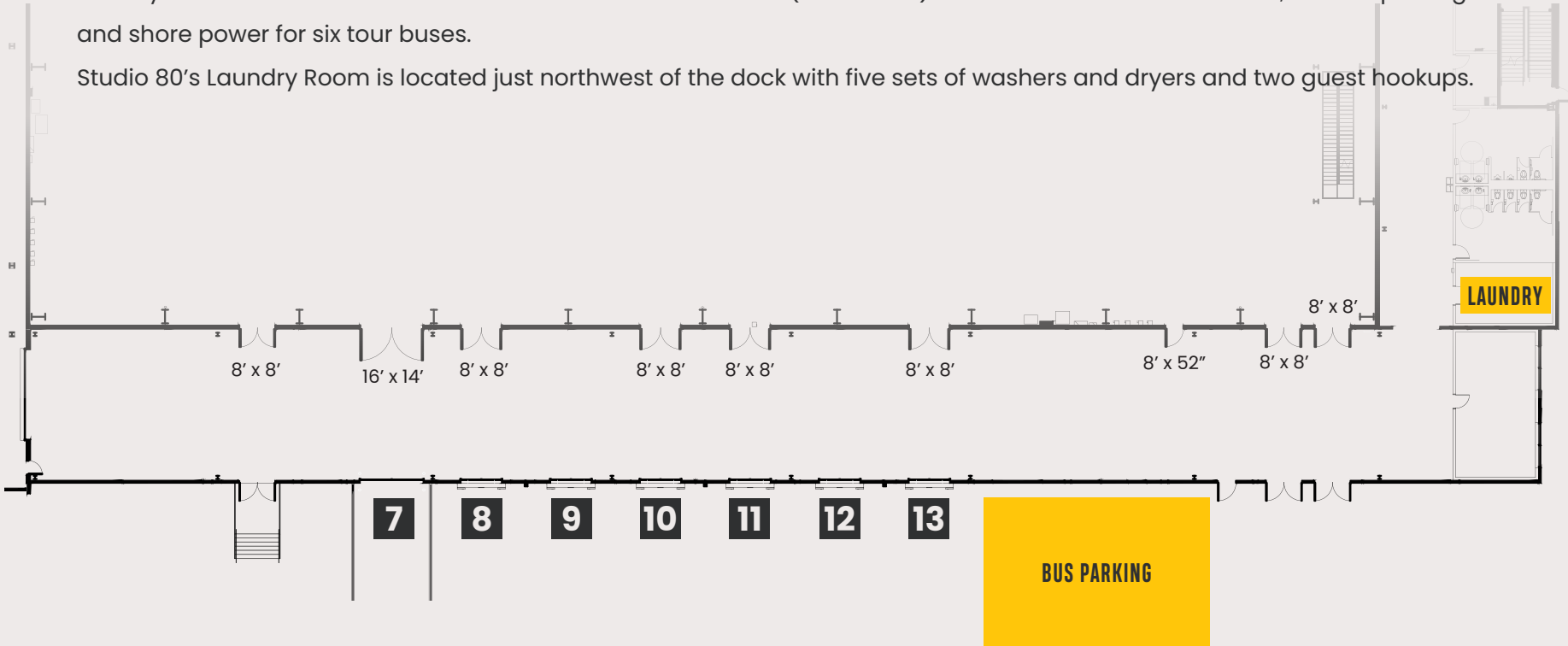
CATERING 5,396 ft²



STUDIO 80 DOCKS

The Studio 80 docks are located on the northeast side of the campus. Trucks can use the drive-up ramp (Door 7) to drive directly into Studio 80 as well as utilize the six additional docks (Doors 8-13). On the north side of the docks, there is parking and shore power for six tour buses.

Studio 80's Laundry Room is located just northwest of the dock with five sets of washers and dryers and two guest hookups.



STUDIO 80 DOCKS & OVERFLOW PARKING

Eastbound on I-64 - Chesterfield Airport Road Exit 14

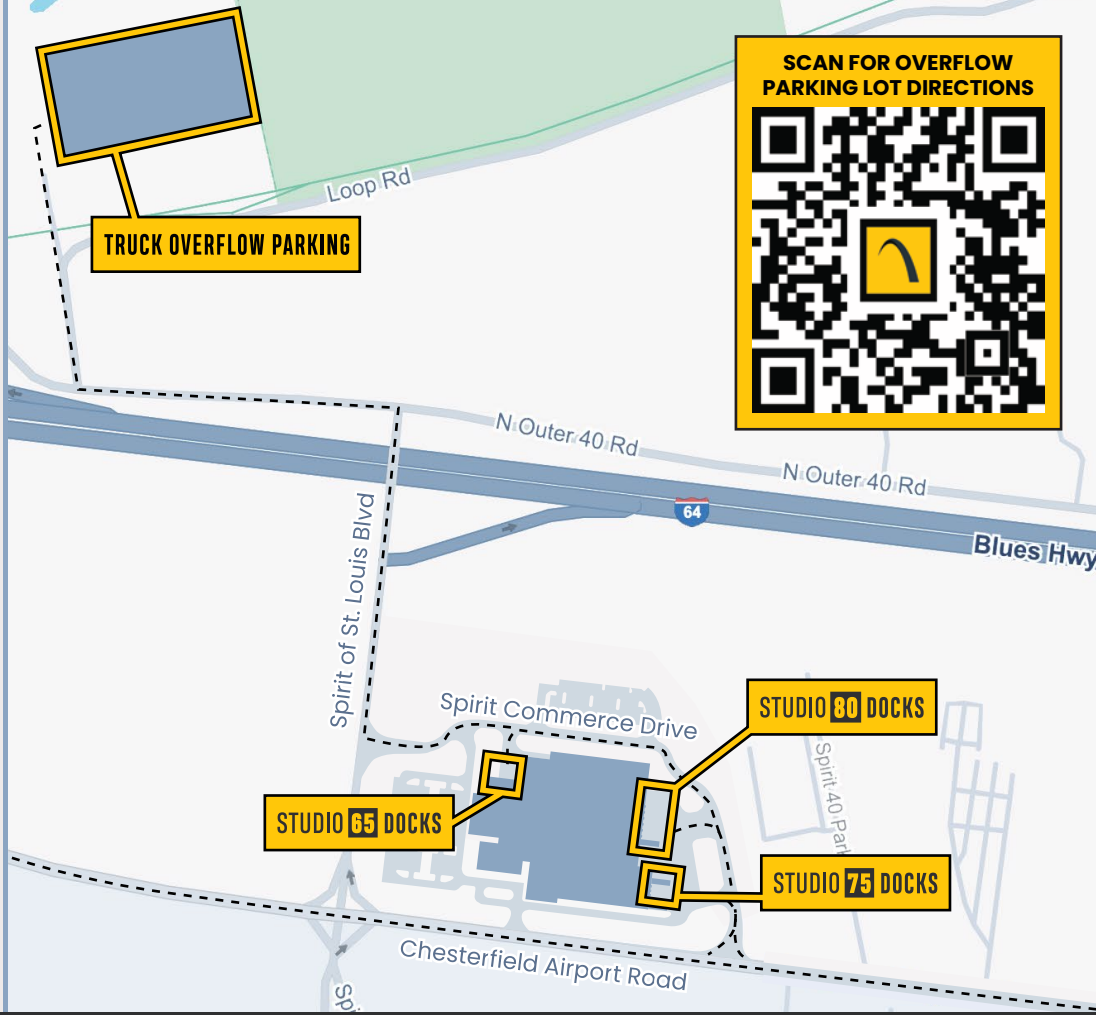
- Continue on Chesterfield Airport Road
- Turn left on Spirit Commerce Drive to access studio loading docks

Westbound on I-64 - Long Road Exit 16

- Turn right onto Chesterfield Airport Road
- Turn right on Spirit Commerce Drive to access studio loading docks

Truck Overflow Parking from the Studios

- Exit on the west end of Spirit Commerce Drive
- Turn Right on Spirit of St. Louis Blvd
- Turn Left on N Outer 40 Rd
- Turn Right and continue straight to access the overflow parking lot



ADDRESS

Gateway Studios

900 Spirit of Saint Louis Blvd
Chesterfield, MO 63005

CONTACT

For studio inquiries and questions:
studios@gspss.com